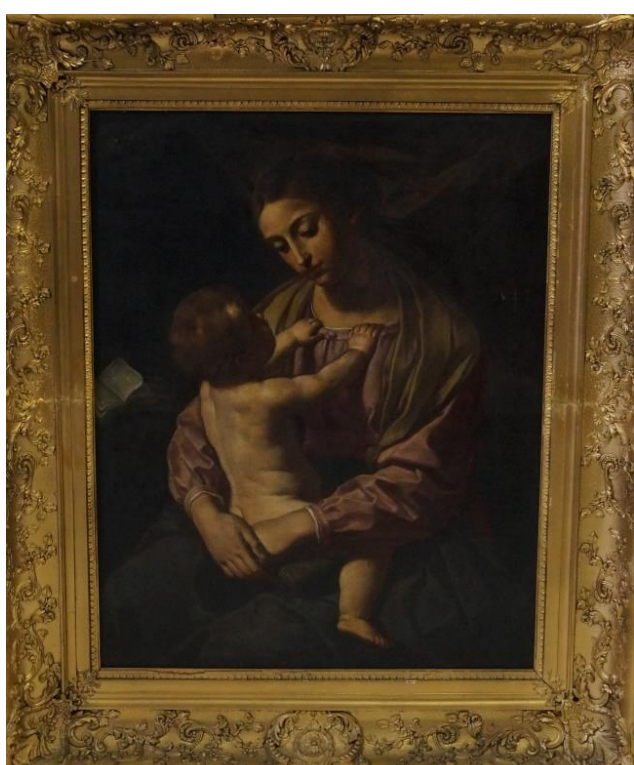


## KNUTSFORD FINE ANTIQUES & INTERIORS SALE—NOVEMBER 2016



Continental School (18th/19th Century) - 'A mother and infant', oil on canvas, bears old handwritten indistinct name verso, approx 104x82cm, inset highly ornate 19th Century gilt gesso frame.

**Sold £12,200**



A cased George VI 1937 Coronation gold proof set, to include five pounds, two pounds, sovereign and half sovereign, enclosed in the Royal Mint issue case. Altogether only five thousand and one of these coins were struck.

**Sold £7,300**



A Medieval style stone carved bust, depicting a male figure with rectangular column (head detached), height of head 30cm.

**Sold £1,400**



Attributed to Henry Dawson (British, 1811-1878) - 'After the storm', oil on canvas, inscribed to mount 'After the Storm, Henry Dawson', approx 76x122cm, inset large and decorative Victorian gilt gesso frame.

**Sold £1,300**



12 bottles Chateau Palmer Grand Cru Classe Margaux 1986

**Sold £1,200**



A pair of highly decorative Regency design torcheres, 19th Century, the dished circular tops raised on carved, turned and fluted columns, terminating on triform bases and winged creature feet, gilt trimmed and white painted finish, each approx 126cm high.

Provenance: By family repute from Tabley House, Knutsford.

**Sold £1,050**